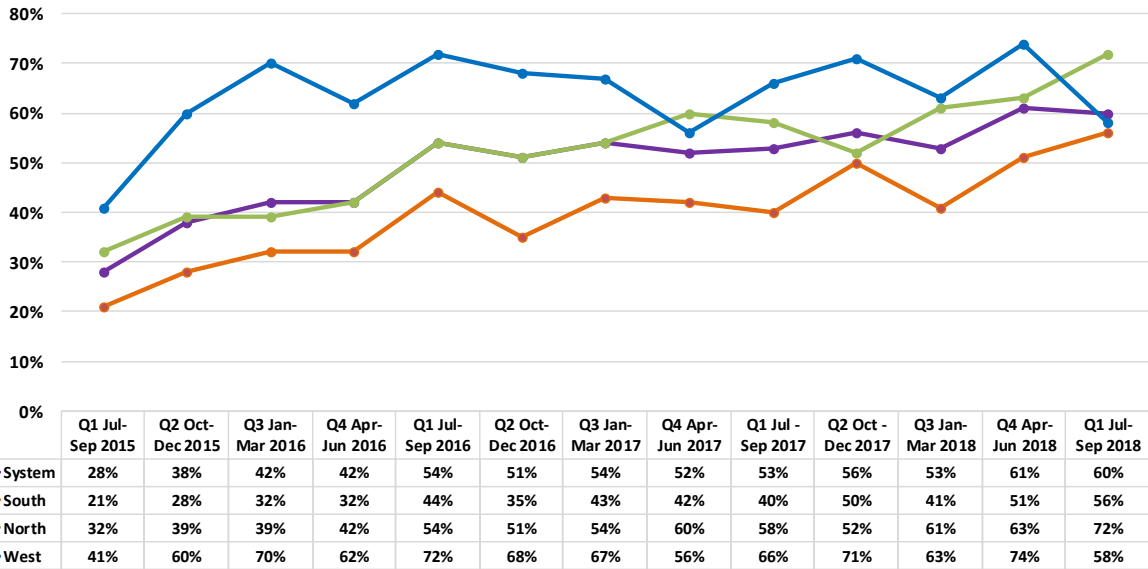
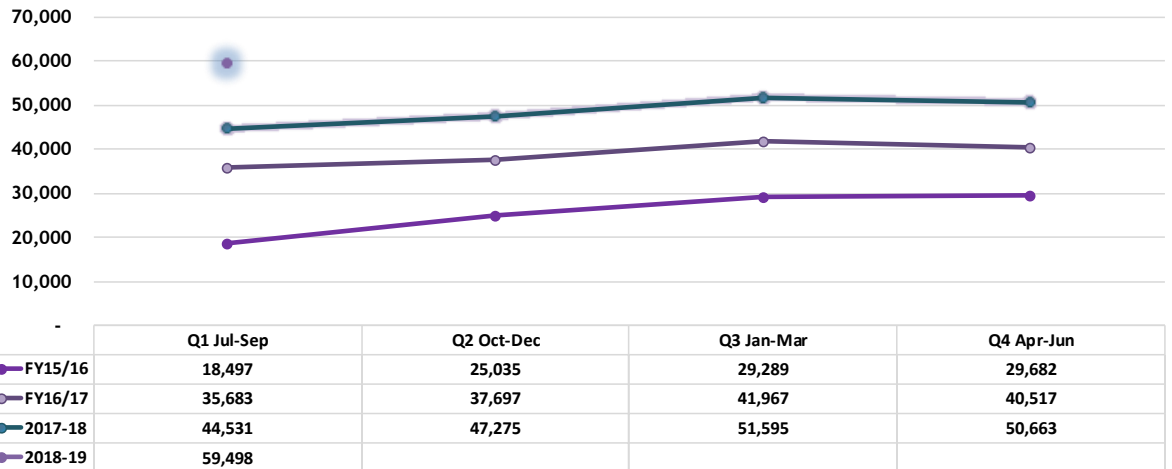


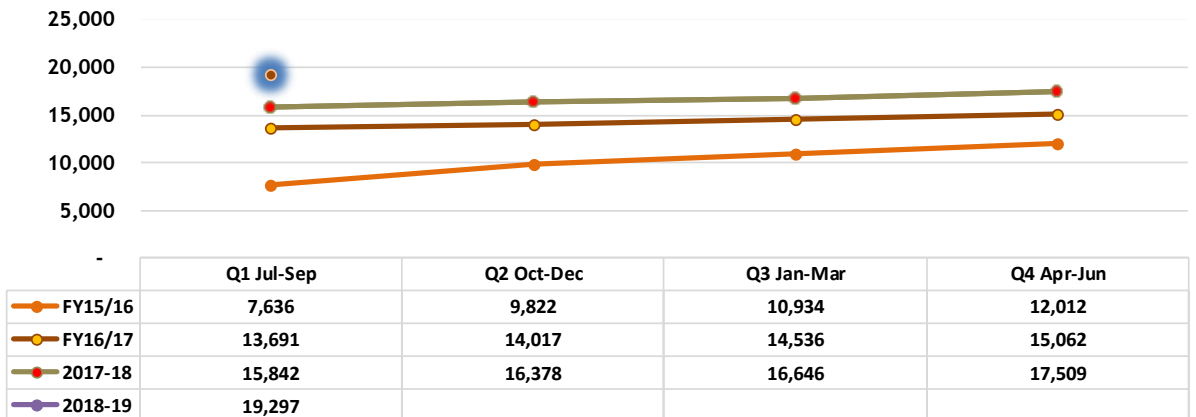
FAREBOX RECOVERY RATIO



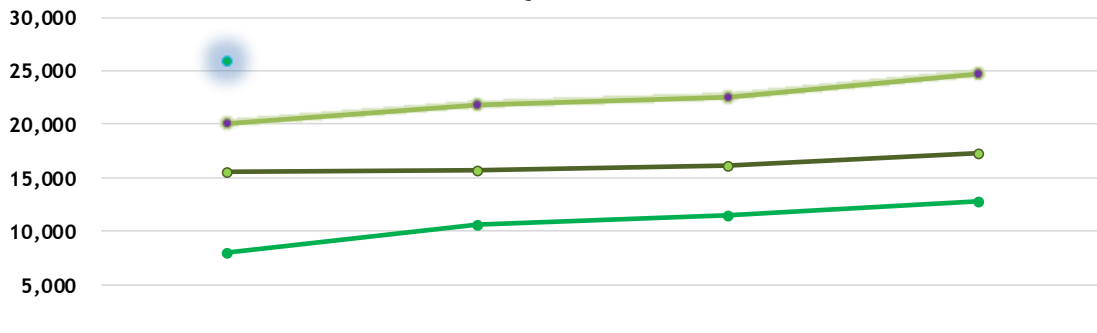
BUSTANG SYSTEM RIDERSHIP QUARTERLY COMPARISON



SOUTH ROUTE RIDERSHIP QUARTERLY COMPARISON

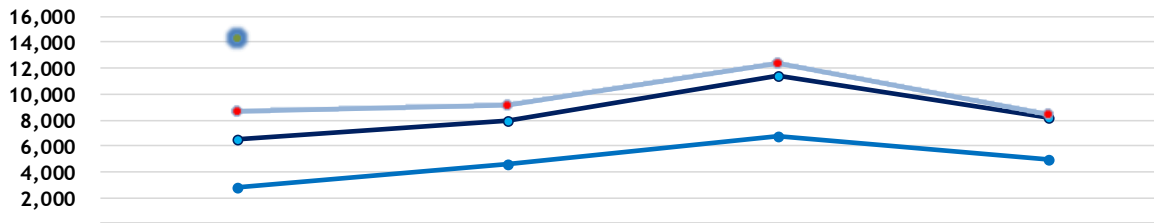


NORTH ROUTE RIDERSHIP QUARTERLY COMPARISON



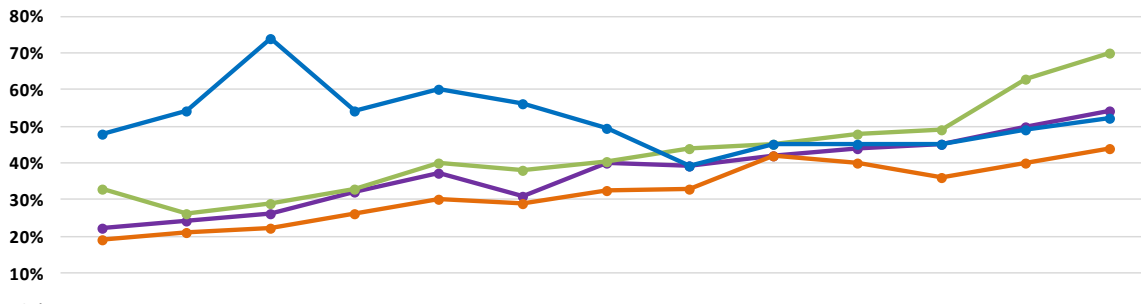
	Q1 Jul-Sep	Q2 Oct-Dec	Q3 Jan-Mar	Q4 Apr-Jun
FY15/16	8,036	10,612	11,549	12,762
FY16/17	15,512	15,764	16,073	17,293
2017-18	20,057	21,768	22,548	24,691
2018-19	25,929			

WEST ROUTE RIDERSHIP QUARTERLY COMPARISON



	Q1 Jul-Sep	Q2 Oct-Dec	Q3 Jan-Mar	Q4 Apr-Jun
FY15/16	2,825	4,601	6,806	4,908
FY16/17	6,480	7,916	11,358	8,162
2017-18	8,632	9,129	12,401	8,463
2018-19	14,272			

LOAD FACTOR BY ROUTE



	Q1 Jul-Sep 2015	Q2 Oct-Dec 2015	Q3 Jan-Mar 2016	Q4 Apr-Jun 2016	Q1 Jul-Sep 2016	Q2 Oct-Dec 2016	Q3 Jan-Mar 2017	Q4 Apr-Jun 2017	Q1 Jul-Sep 2017	Q2 Oct-Dec 2017	Q3 Jan-Mar 2018	Q4 Apr-Jun 2018	Q1 Jul-Sep 2018
System	22%	24%	26%	32%	37%	31%	40%	39%	42%	44%	45%	50%	54%
South	19%	21%	22%	26%	30%	29%	32%	33%	42%	40%	36%	40%	44%
North	33%	26%	29%	33%	40%	38%	40%	44%	45%	48%	49%	63%	70%
West	48%	54%	74%	54%	60%	56%	49%	39%	45%	45%	45%	49%	52%